

TIMEX
SUMMER 2018





TIMEX

MILITARY COLLECTION

MK1 Aluminium Chronograph	7
MK1 Aluminium	9
MK1 Steel Chronograph	10
Allied	12
Allied Chronograph	15
Allied Chronograph PU	17
Allied Coastline	19

ESSENTIAL COLLECTION

Fairfield Supernova	22
Fairfield Crystal	24
Fairfield	26
Fairfield Sub Second	28
Fairfield Chronograph	30
Easy Reader® 40th Anniversary	32

TRADITIONAL COLLECTION

Waterbury Classic	37
Waterbury Classic Chronograph	38
Waterbury Traditional	41
Waterbury Traditional Chronograph	42
Waterbury Linear Chronograph	45
Waterbury World Time	47

MARKETING MATERIAL

Point of Sale	48
Merchandising Guidelines	51
Social Media Assets	52
Web Banners & EDM Templates	53
In-Store Visuals & Collateral	54
Warranty & Customer Service	56

TIMEX



**THE MILITARY
COLLECTION**



THE MK1

MK1 ALUMINIUM CHRONOGRAPH

Racing against danger on set, stunt man Riley Harper doesn't have time to second guess his next move. The MK1 shares his brave spirit: our original military-spec watch has been modernized in a tough aluminium case for streamlined strength and style.

BUILT TO LAST



MK1 ALUMINIUM CHRONOGRAPH

FEATURES

- Anodized Aluminium Case
- Domed Acrylic Crystal
- Double Layer Nylon Slip-Thru Strap
- Chronograph Function with 4 hour Capacity
- Quick Date®
- INDIGLO® Night-Light
- Water Resistant to 30M



TW2R67900 - \$199.95

Brushed Olive Anodized Case
Silver-Tone Dial
Olive Nylon Strap
40mm Case, 20mm Lug



TW2R67600 - \$199.95

Brushed Blue Anodized Case
Blue Dial
Blue Nylon Strap
40mm Case, 20mm Lug



TW2T10700 - \$199.95

Brushed Silver-tone Anodized Case
Black Dial
Tan Nylon Strap
40mm Case, 20mm Lug



THE MK1

MK1 ALUMINIUM



NEW



TW2T10300 - \$149.95

Brushed Silver-tone Anodized Case
Black Dial
Tan Nylon Strap
40mm Case, 20mm Lug



TW2R37300 - \$149.95

Brushed Blue Aluminium Case
Blue Dial
Blue Nylon Strap
40mm Case, 20mm Lug



TW2R37500 - \$149.95

Brushed Olive Aluminium Case
Olive Dial
Olive Nylon Strap
40mm Case, 20mm Lug



TW2R37400 - \$149.95

Brushed Black Aluminium Case
Black Dial
Black Nylon Strap
40mm Case, 20mm Lug



MK1 ALUMINIUM

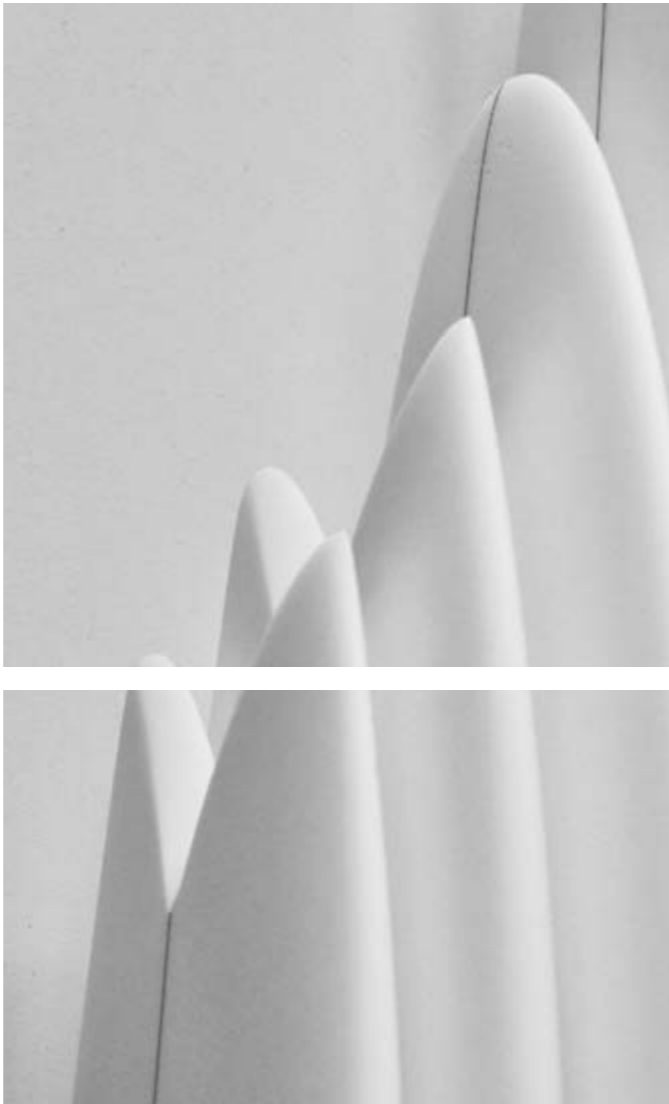
FEATURES

- Anodized Aluminium Case
- Domed Acrylic Crystal
- Double Layer NYLON Slip-Thru Strap
- INDIGLO® Night-Light
- Water Resistant to 30M



THE MK1

MK1 STEEL CHRONOGRAPH



MK1 STEEL CHRONOGRAPH

FEATURES

- Stainless Steel Case
- Domed Acrylic Crystal
- Fabric Strap with Quick-Release Spring Bars (TW2R68800, TW2R68700, TW2R68600)
- Matte Stainless Steel Bracelet (TW2R68900)
- Geniune S.B Foot Tanning Co.® Leather Strap with Quick-Release Spring Bars (TW2R96500, TW2R96400)
- Chronograph Function with 4 hour Capacity
- Quick Date®
- INDIGLO® Night-Light
- Water Resistant to 30M



TW2R68800 - \$229.95

Brushed Stainless Steel Case
Grey Dial
Black Fabric Quick-Release Strap
42mm Case, 20mm Lug



TW2R68700 - \$229.95

Brushed Black Stainless Steel Case
Black Dial
Black Fabric Quick-Release Strap
42mm Case, 20mm Lug



TW2R68600 - \$229.95

Matte Stainless Steel Case
Olive Dial
Olive Fabric Quick-Release Strap
42mm Case, 20mm Lug



TW2R68900 - \$249.95

Matte Stainless Steel Case
White Dial
Matte Stainless Steel Bracelet
42mm Case, 20mm Lug



TW2R96500 - \$279.95

Black Stainless Steel Case
Black Dial
Black Genuine Leather Strap
42mm Case, 20mm Lug



TW2R96400 - \$279.95

Stainless Steel Case
Cream Dial
Brown Genuine Leather Strap
42mm Case, 20mm Lug



THE MK1

MK1 STEEL
CHRONOGRAPH



MK1 STEEL

FEATURES

- Domed Acrylic Crystal
- Geniune S.B Foot Tanning Co.® Leather Strap with Quick-Release Spring Bars
- INDIGLO® Night-Light
- Water Resistant to 30M

NEW



TW2R96800 - \$229.95

- Stainless Steel Case
- Cream Dial
- Brown Genuine Leather Strap
- 40mm Case, 20mm Lug



NEW



TW2R96900 - \$229.95

- Black Stainless Steel Case
- Black Dial
- Black Genuine Leather Strap
- 40mm Case, 20mm Lug



THE ALLIED

ALLIED



ALLIED

FEATURES

- Genuine Leather Strap
- Quick Date®
- INDIGLO® Night Light
- Water Resistant to 50M



TW2R46500 - \$149.95

- Grey Case
- Black Dial
- Black Leather Strap
- 40mm Case, 20mm Lug



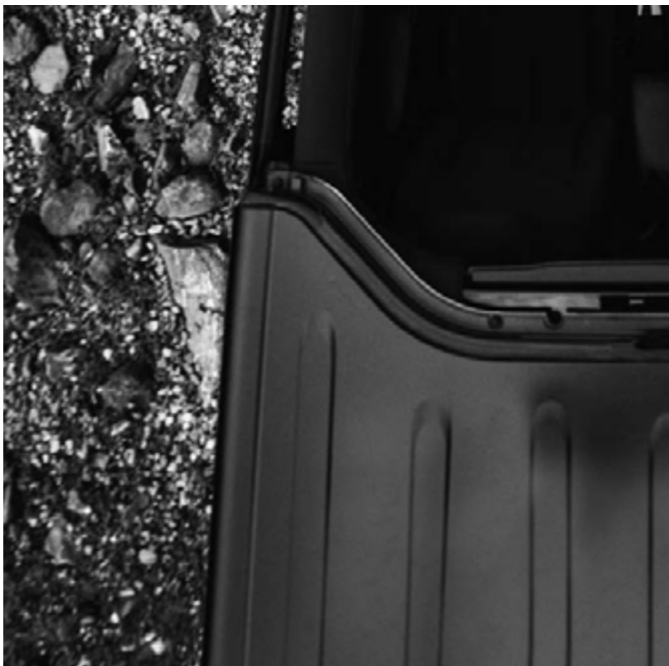
TW2R46400 - \$149.95

- Silver-Tone Case
- Natural Dial
- Brown Leather Strap
- 40mm Case, 20mm Lug



THE ALLIED

ALLIED CHRONOGRAPH



ALLIED CHRONOGRAPH

FEATURES

- Fabric Strap with Genuine Leather Backing
- Chronograph with 4 Hour Capacity
- Quick Date®
- INDIGLO® Night-Light
- Water Resistant to 100M



TW2R47200 - \$199.95

Matte Grey Case
Black Dial
Olive Fabric Strap with Genuine
Leather Backing
40mm Case, 20mm Lug

0 753048 737376



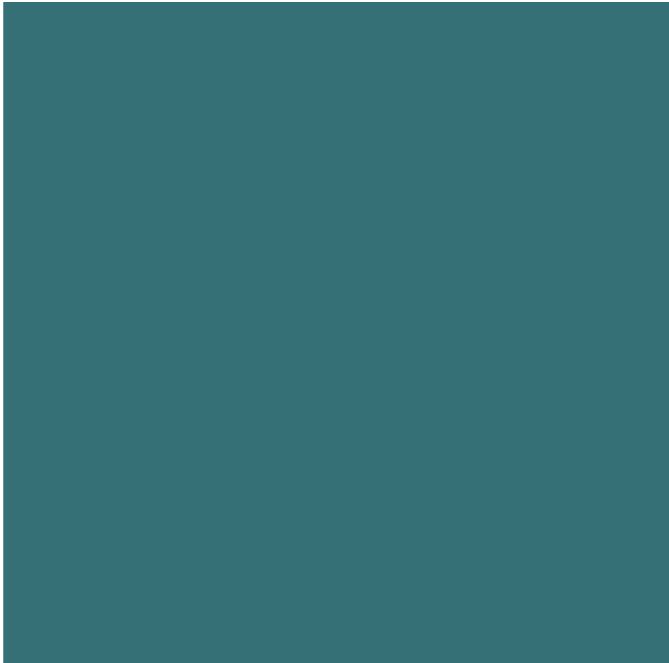
TW2R47300 - \$199.95

Matte Silver-Tone Case
Natural Dial
Beige Fabric Strap with Genuine
Leather Backing
40mm Case, 20mm Lug

0 753048 737383

THE ALLIED

ALLIED
CHRONOGRAPH



ALLIED CHRONOGRAPH

FEATURES

- Blended PU/Silicone Strap with Quick Release Spring Bars
- Chronograph with 4 Hour Capacity
- Quick Date®
- INDIGLO® Night-Light
- Water Resistant to 100M



TW2R67300 - \$199.95

Matte Grey Case
Grey Dial
Orange PU/Silicone Strap
42mm Case, 20mm Lug



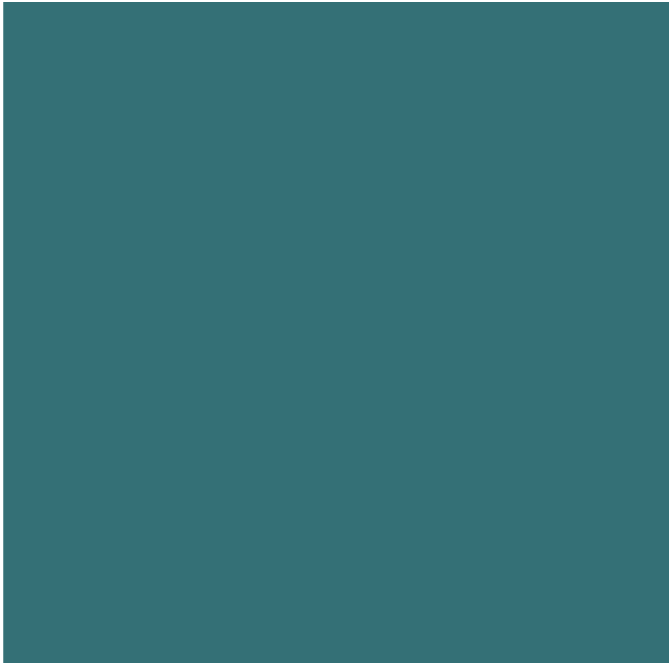
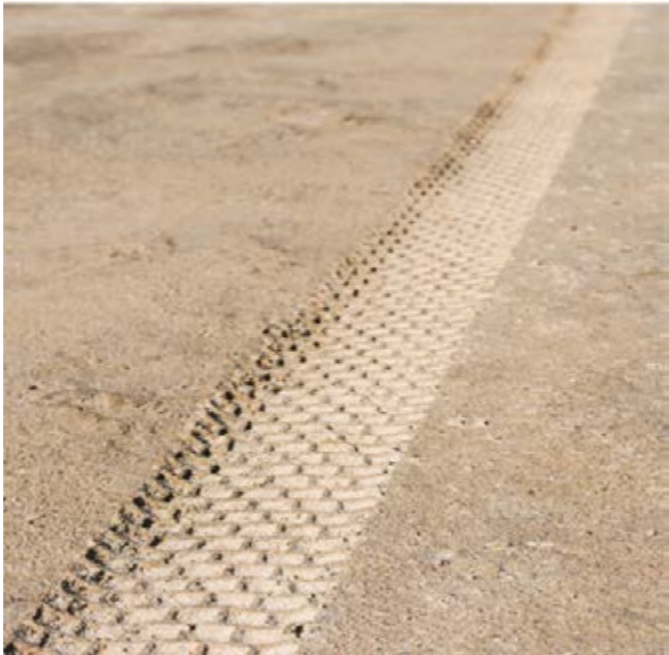
TW2R60400 - \$199.95

Matte Grey Case
Black Dial
Black PU/Silicone Strap
42mm Case, 20mm Lug



THE ALLIED

ALLIED COASTLINE



ALLIED COASTLINE

FEATURES

- Blended PU/Silicone or Genuine Leather Strap
- Elapsed Time Turning Top Ring
- Quick Date®
- INDIGLO® Night-Light
- Water Resistant to 100M



TW2R45700 - \$199.95

Matte Bronze-Tone Case
Brown Dial
Brown Leather Strap
43mm Case, 20mm Lug



TW2R45800 - \$199.95

Matte Silver-Tone Case
Black Dial
Black Leather Strap
43mm Case, 20mm Lug



TW2R60700 - \$199.95

Matte Silver-Tone Case
Blue Dial
Blue PU/Silicone Strap
43mm Case, 20mm Lug



TW2R60600 - \$199.95

Matte Silver-Tone Case
Black Dial
Black PU/Silicone Strap
43mm Case, 20mm Lug

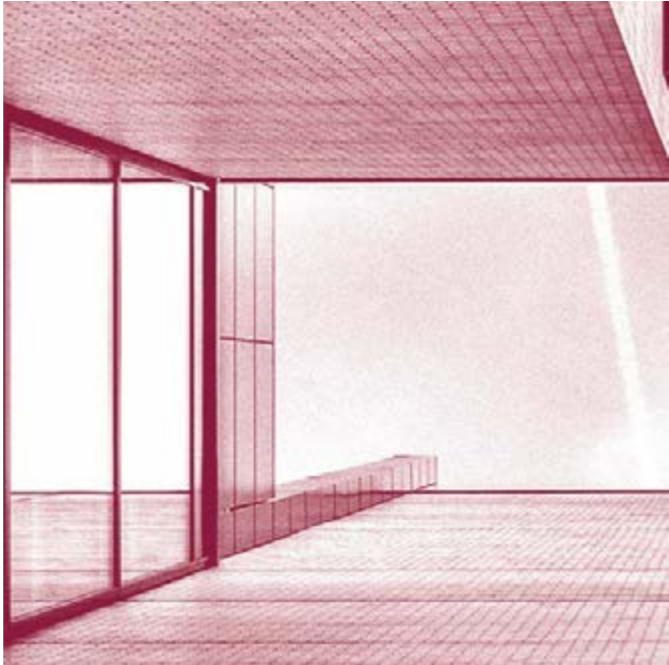
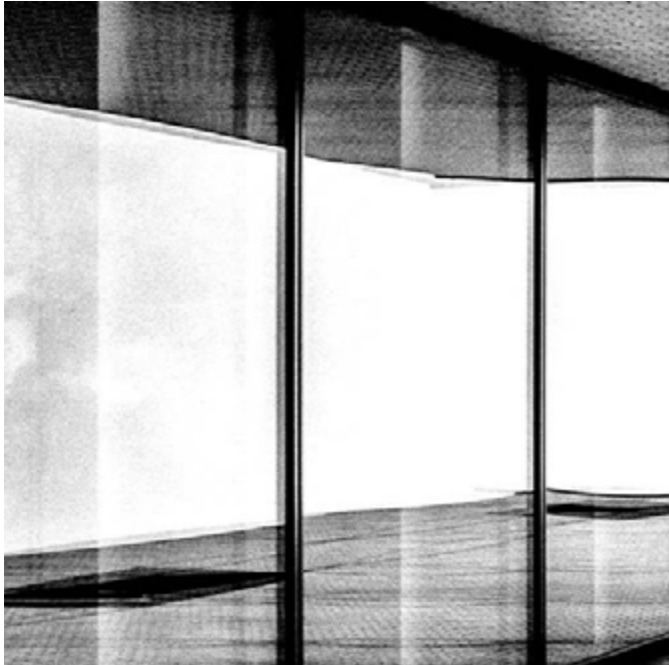
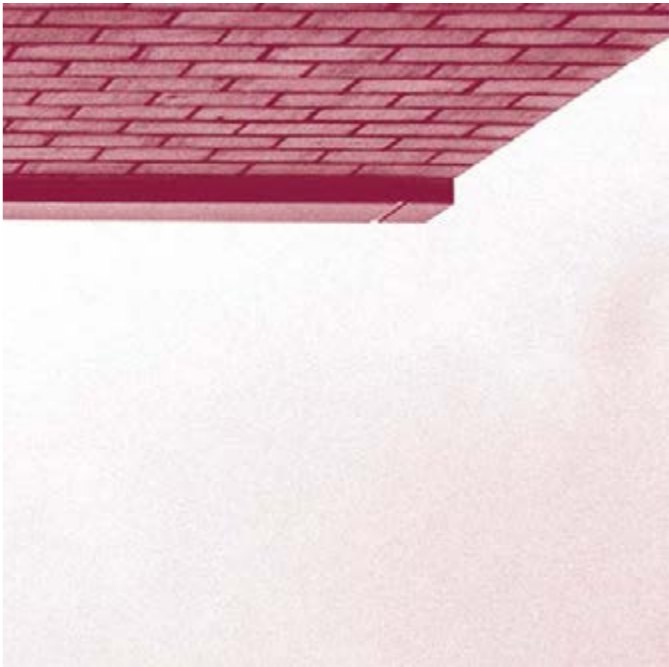
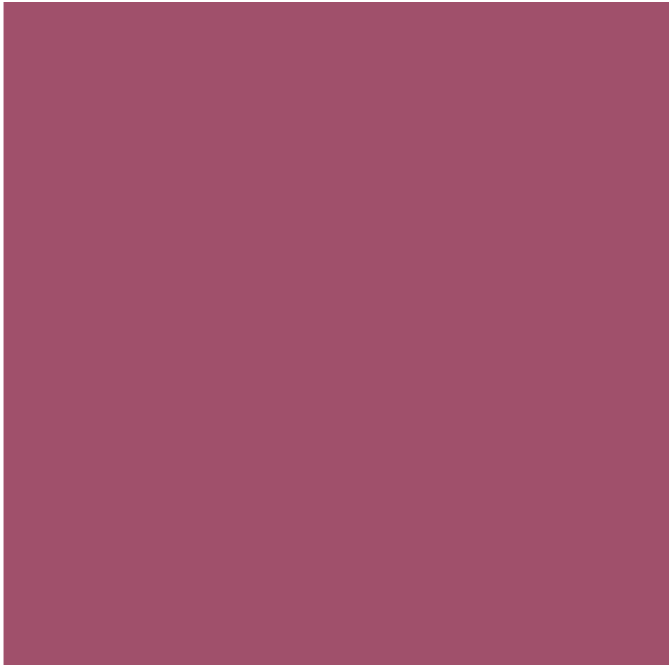
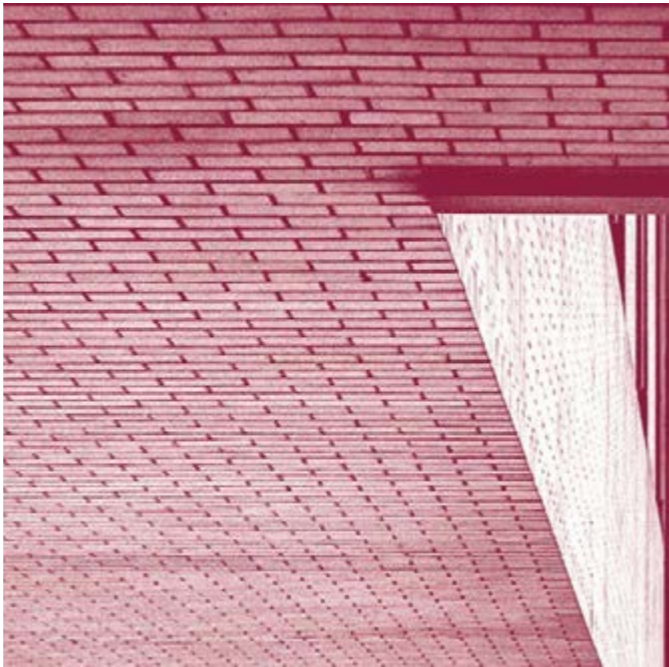


TW2R67400 - \$199.95

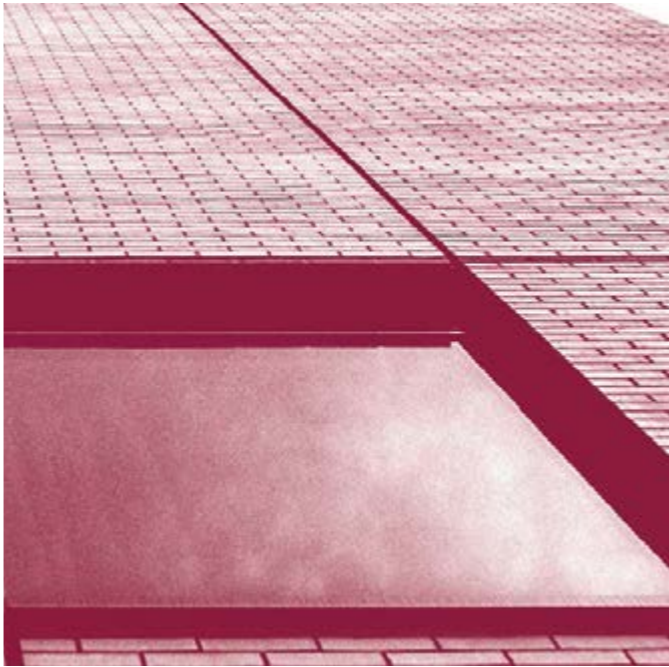
Matte Silver-Tone Case
Grey Dial
Orange PU/Silicone Strap
43mm Case, 20mm Lug



TIMEX



THE ESSENTIAL
COLLECTION



TIMEX



FAIRFIELD SUPERNOVA

FEATURES

- Innovative New Dial Treatment
- Stainless Steel Mesh Band
- Chronograph with 4 Hour Capacity
- Quick Date®
- INDIGLO® Night-Light
- Water Resistant to 30M



SUPERNOVA INDIGLO® DIAL DESIGN

The TIMEX Supernova is the new way to experience our INDIGLO® Night-Light technology. A thin layer of metal is placed on top of the dial and, using precision, laser cutting techniques, the top layer is perforated to allow the light to pass through, creating a new and unique way to illuminate the dial.



TW2R9800 - \$249.95

- Grey Case
- Grey Dial
- Grey Stainless Steel Mesh Band
- 41mm Case, 20mm Lug



TW2R97900 - \$249.95

- Silver-tone Case
- Silver-tone Dial
- Silver-tone Stainless Steel Mesh Band
- 41mm Case, 20mm Lug



THE FAIRFIELD

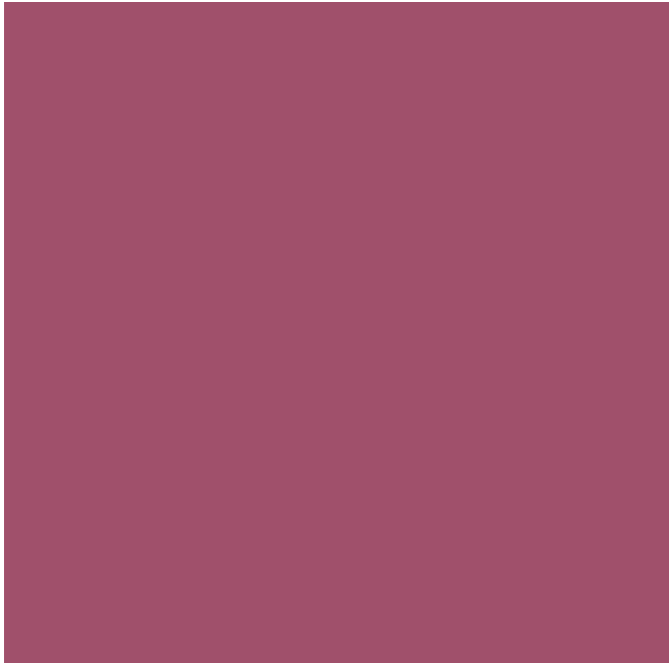
FAIRFIELD SUPERNOVA



FAIRFIELD SUPERNOVA

FEATURES

- Innovative New Dial Treatment
- Chronograph with 4 Hour Capacity
- Perforated Genuine Leather Strap
- Quick Date®
- INDIGLO® Night-Light
- Water Resistant to 30M



TW2R79900 - \$199.95

Matte Silver-Tone Case
Silver Dial
Tan Matte Leather Strap
41mm Case, 20mm Lug



TW2R79800 - \$199.95

Matte Black Case
Black Dial
Black Matte Leather Strap
41mm Case 20mm Lug



TW2R80100 - \$199.95

Matte Bronze-Tone Case
Bronze Dial
Brown Matte Leather Strap
41mm Case, 20mm Lug



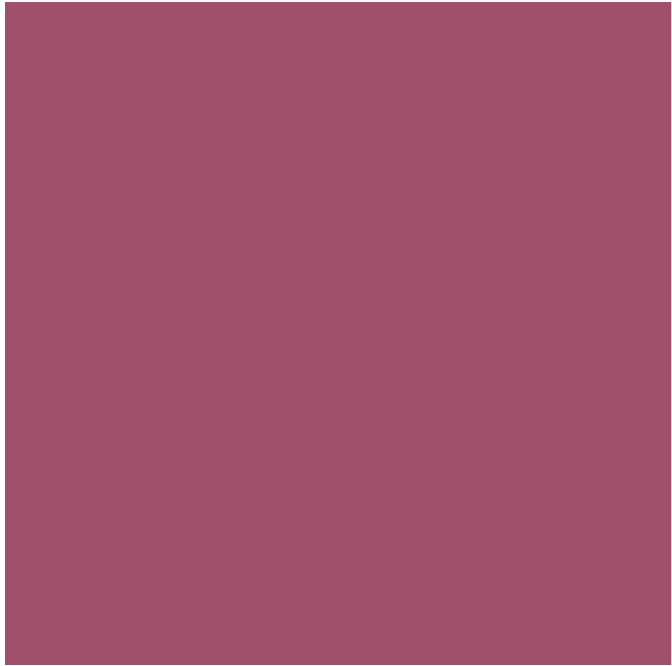
TW2R80000 - \$199.95

Matte Black Case
Grey Dial
Brown Matte Leather Strap
41mm Case, 20mm Lug



THE FAIRFIELD

FAIRFIELD
CHRONOGRAPH



FAIRFIELD CHRONOGRAPH

FEATURES

- Genuine Leather Strap
- Chronograph Function with 4 Hour Capacity
- Quick Date®
- INDIGLO® Night-Light
- Water Resistant to 30M

NEW



TW2T11500 - \$229.95

Silver-Tone Case
Rose Gold-Tone Accents
Black Dial
Dark Brown Genuine Leather Strap
41mm Case, 20mm Lug

0 753048 812462

NEW



TW2T11600 - \$229.95

Rose Gold-Tone Case
Black Dial
Black Genuine Leather Strap
41mm Case, 20mm Lug

0 753048 812479

THE FAIRFIELD

FAIRFIELD CRYSTAL



FAIRFIELD CRYSTAL

FEATURES

- Genuine Leather Strap with Quick-Release Spring Bars
- Genuine Swarovski® Crystal Accent
- INDIGLO® Night-Light
- Water Resistant to 30M



TW2R70500 - \$169.95

Polished Gold-Tone Case
White Dial
Bone Smooth Leather Strap
37mm Case, 16mm Lug



TW2R70200 - \$169.95

Polished Rose Gold-Tone Case
Cream Dial
Tan Smooth Leather Strap
37mm Case, 16mm Lug



TW2R70400 - \$169.95

Polished Silver-Tone Case
White Dial
Pale Pink Smooth Leather Strap
37mm Case, 16mm Lug



TW2R70300 - \$169.95

Polished Silver-Tone Case
White Dial
Sky Blue Smooth Leather Strap
37mm Case, 16mm Lug



THE FAIRFIELD

FAIRFIELD



FAIRFIELD

FEATURES

- Stainless Steel Mesh Bracelet
- Quick Release Spring Bars
- INDIGLO® Night-Light
- Water Resistant to 30M



TW2R26400 - \$179.95

Polished Rose Gold-Tone Case
Cream Dial
Rose Gold-Tone Mesh Strap
37mm Case, 18mm Lug



TW2R26600 - \$179.00

Polished Silver-Tone Case
White Dial
Polished Silver-Tone Mesh Strap
37mm Case, 18mm Lug



TW2R26500 - \$179.95

Polished Gold-Tone Case
White Dial
Polished Gold-Tone Mesh Strap
37mm Case, 18mm Lug



THE FAIRFIELD

FAIRFIELD



FAIRFIELD

FEATURES

- Genuine Leather Strap
- Quick Release Spring Bars
- INDIGLO® Night-Light
- Water Resistant to 30M



TW2R26200 - \$149.95

Polished Rose Gold-Tone Case
Cream Dial
Tan Smooth Leather Strap
41mm Case, 20mm Lug



TW2R26300 - \$149.95

Polished Silver-Tone Case
White Dial
Black Smooth Leather Strap
41mm Case, 20mm Lug



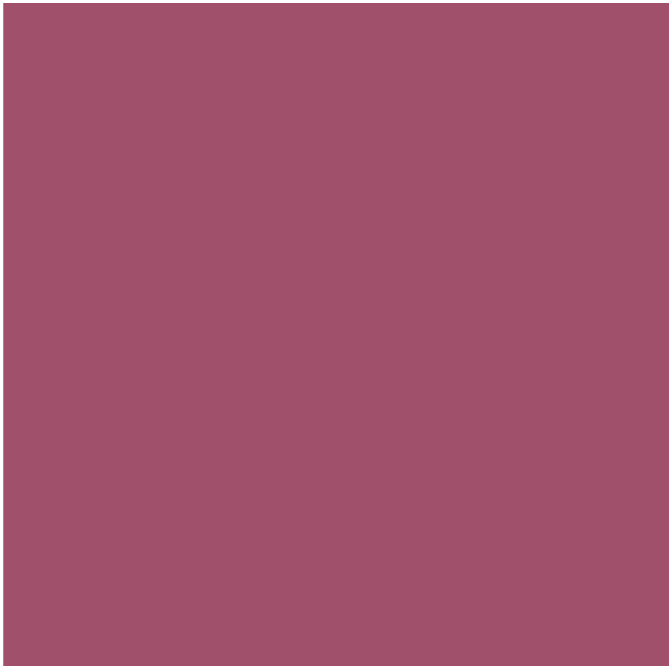
TW2R26000 - \$149.95

Polished Gold-Tone Case
Black Dial
Black Smooth Leather Strap
41mm Case, 20mm Lug



THE FAIRFIELD

FAIRFIELD
CHRONOGRAPH



FAIRFIELD CHRONOGRAPH

FEATURES

Stainless Steel Mesh (TW2R27100) Or Genuine Leather
(TW2R26800, TW2R26700) Quick Release Straps
Chronograph with 4 Hour Capacity
Quick Date®
INDIGLO® Night-Light
Water Resistant to 30M



TW2R27100 - \$229.95

Polished Silver-Tone Case
White Dial
Stainless Steel Mesh Strap
41mm Case, 20mm Lug



TW2R26800 - \$199.95

Polished Black Case
Black Dial
Black Leather Strap
41mm Case, 20mm Lug



TW2R26700 - \$199.95

Polished Silver-Tone Case
White Dial
Tan Leather Strap
41mm Case, 20mm Lug

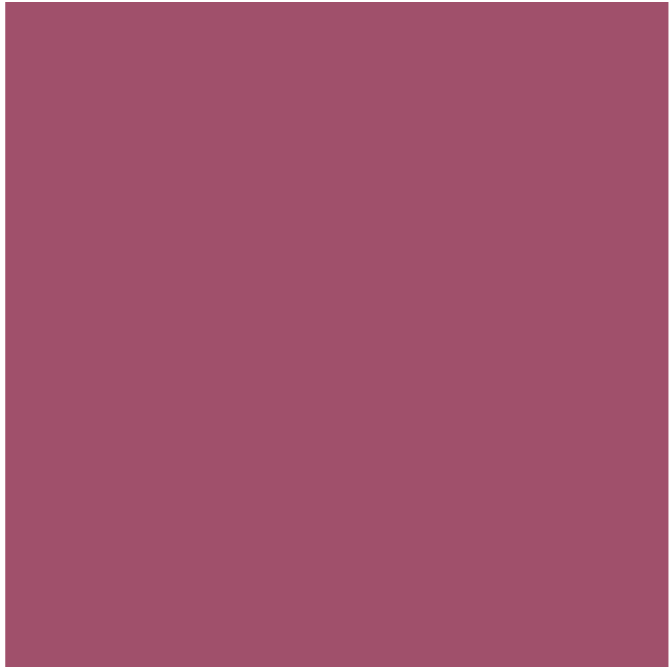


Easy Reader®

40TH ANNIVERSARY

Our Easy Reader® 40th Anniversary Edition, worn by musician Nick Waterhouse, is dedicated to those who are passionate about their craft. This analogue piece of authentic American history is made with style and soul, and only gets better with time.

HERE'S TO TRULY TIMELESS



Easy Reader®

FEATURES

- Genuine Horween® Leather Strap
- Special Caseback to Celebrate the 40th Anniversary of Easy Reader®
- INDIGLO® Night-Light with Hidden Message
- Water Resistant to 30M



TW2R35700 - \$149.95

Polished Silver-Tone Case
White Dial
Black Leather Strap
38mm Case, 20mm Lug



TW2R35900 - \$149.95

Polished Silver-Tone Case
Green Dial
Tan Leather Strap
38mm Case, 20mm Lug

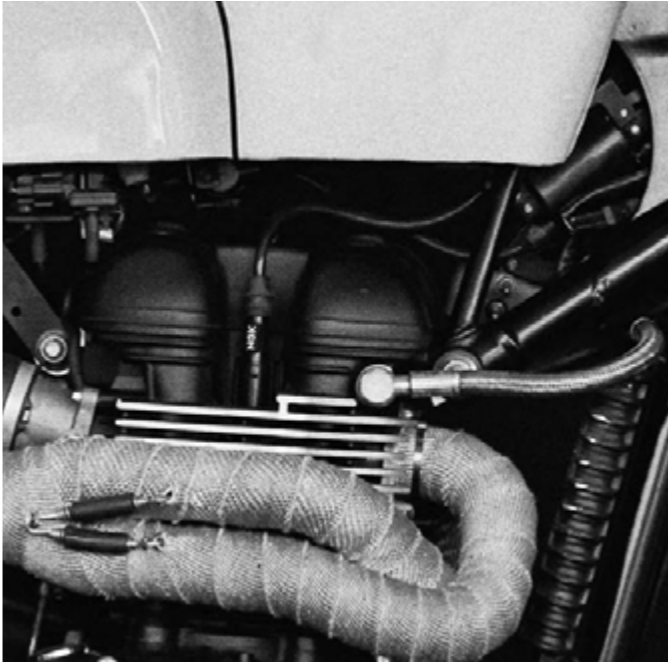
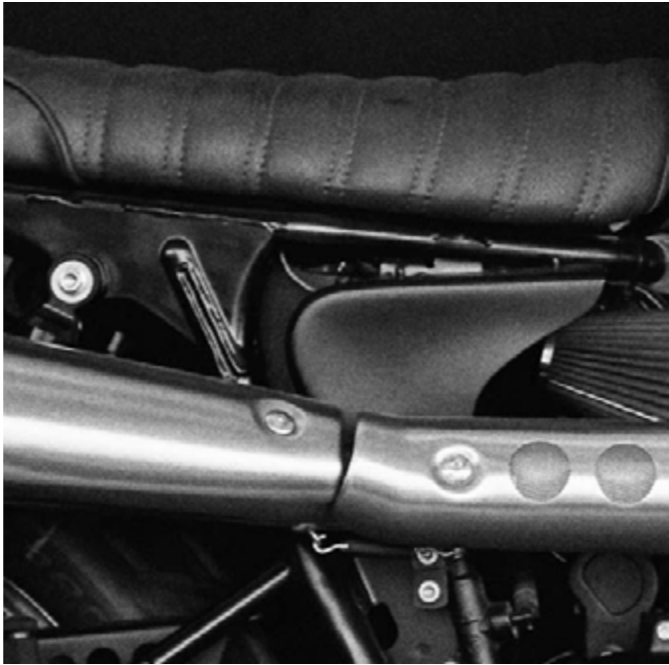
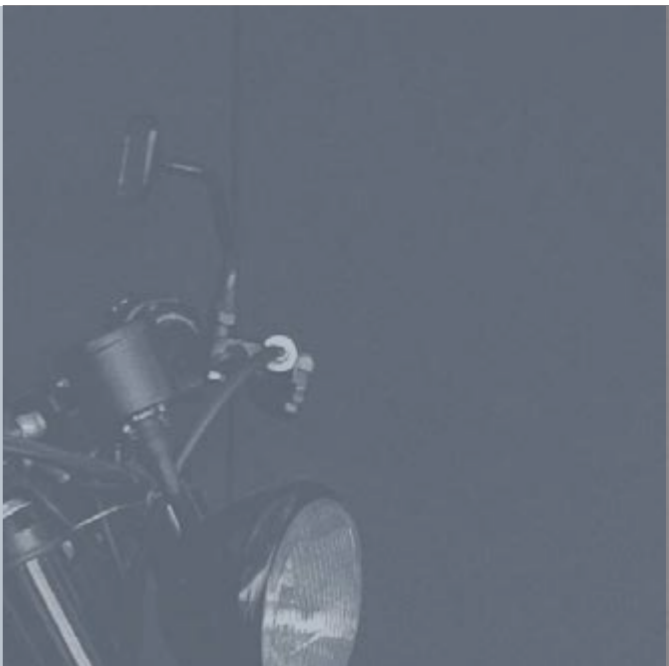


TW2R36000 - \$149.95

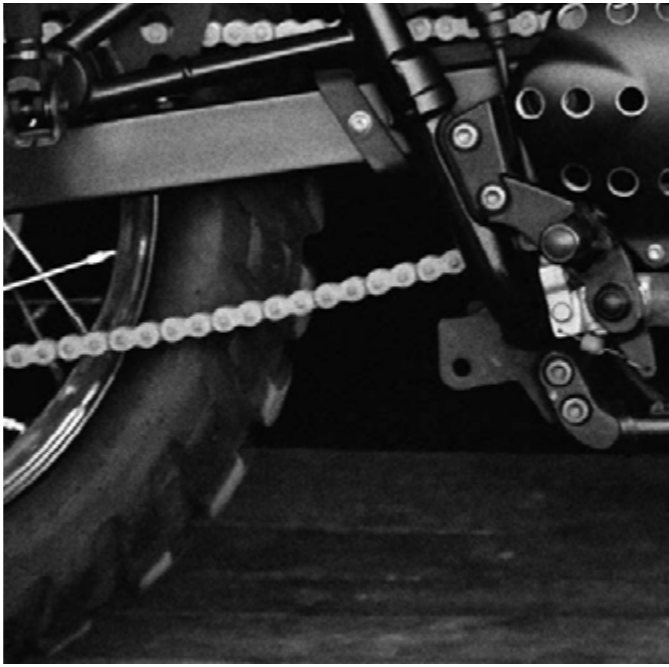
Polished Silver-Tone Case
Blue Dial
Brown Leather Strap
38mm Case, 20mm Lug



TIMEX



TRADITIONAL
COLLECTION



THE WATERBURY

.....

WATERBURY CLASSIC

Jeff McCallum’s custom-made surfboards are functional works of art. He wears a timepiece that matches his passion for quality and craftsmanship: the Waterbury, a heritage style inspired by our roots, updated for today.

A SKILL HONED OVER TIME.



WATERBURY CLASSIC

.....

FEATURES

- Stainless Steel Case
- Genuine Leather with Croco Pattern straps
- Quick-Release Spring Bars
- INDIGLO® Night Light
- Water Resistant to 30M



TW2R72400 - \$199.95

.....

Brushed/Polished Stainless Steel Case
White 3 Hand Dial
Black Croco Leather Strap
36mm Case, 18mm Lug



TW2R72500 - \$199.95

.....

Brushed/Polished Rose Gold-Tone Case
Black 3 Hand Dial
Brown Croco Leather Strap
36mm Case, 18mm Lug



THE WATERBURY

.....

WATERBURY CLASSIC CHRONOGRAPH



WATERBURY CLASSIC CHRONOGRAPH

.....

FEATURES

Stainless Steel Case
Genuine Leather Strap (TW2R71800, TW2R71600, TW2R72300)
or Stainless Steel Bracelet (TW2R71900)
Quick-Release Spring Bars
Chronograph with 4 Hour Capacity
Quick Date®
INDIGLO® Night-Light
Water Resistant to 30M



TW2R71900 - \$279.95

.....

Brushed/Polished Stainless Steel Case
Black Dial
Brushed Stainless Steel Bracelet
40mm Case, 20mm Lug



TW2R71800 - \$249.95

.....

Brushed/Polished Black
Stainless Steel Case
Black Dial
Black Smooth Leather Strap
40mm Case, 20mm Lug



TW2R71600 - \$249.95

.....

Brushed/Polished Rose
Gold-Tone Case
Black Dial
Brown Croco Leather Strap
40mm Case, 20mm Lug



TW2R72300 - \$249.95

.....

Brushed/Polished Black
Stainless Steel Case
White Dial
Black Smooth Leather Strap
40mm Case, 20mm Lug



THE WATERBURY

WATERBURY LINEAR CHRONOGRAPH

POWERED BY
INTELLIGENT QUARTZ® Technology



WATERBURY LINEAR CHRONOGRAPH

FEATURES

- Stainless Steel Case
- Genuine S.B. Foot Tanning Co. Leather Straps with Quick-Release Spring Bars
- Proprietary Intelligent Quartz Linear Chronograph movement
- Quick Date®
- Water Resistant to 50M

TIMEX LINEAR CHRONOGRAPH

The Timex Linear Chronograph, features the linear presentation of the chronograph minutes. This is accomplished through a proprietary microprocessor-controlled, multi-motor, multi-hand technology.

The minute sub-dial rises from 0 to 30 minutes then glides back down to 0 and back up again. Up to four hours are tracked on the fan shaped, lower sub-dial, which also tracks a second time-zone when the chronograph is not in use.

The date window has been strategically placed above the lower sub-dial and completes the trinity of movement complications working beneath the classically beautiful dial.



TW2R69000 - \$369.95

- Brushed Matte Grey Stainless Steel Case
- Grey Dial
- Black Smooth Leather Strap
- 45mm Case, 22mm Lug



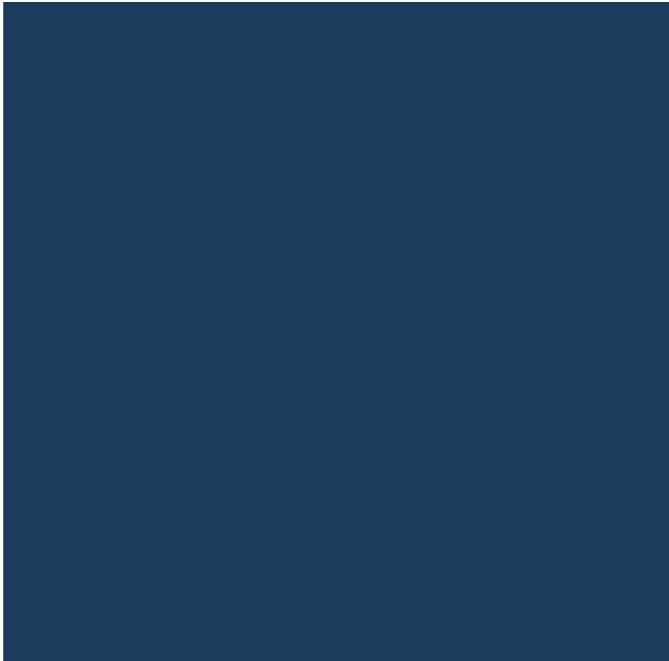
TW2R69200 - \$369.95

- Brushed/Polished Grey Stainless Steel Case
- Burgundy Dial
- Burgundy Smooth Leather Strap
- 45mm Case, 22mm Lug



THE WATERBURY

WATERBURY 3RD
GENERATION
TRADITIONAL
CHRONOGRAPH



WATERBURY 3RD GENERATION
TRADITIONAL CHRONOGRAPH

FEATURES

- Stainless Steel Case
- Genuine S.B. Foot Tanning Co. Leather Strap
- with Quick-Release Spring Bars
- Chronograph with 4 Hour Capacity
- Quick Date®
- INDIGLO® Night Light
- Water Resistant to 50M

NEW



TW2R88400 - \$279.95

- Black Stainless Steel Case
- Black Dial
- Black Genuine Leather Strap
- 42mm Case, 20mm Slug



THE WATERBURY

.....

TRADITIONAL

DAY DATE



WATERBURY TRADITIONAL

DAY DATE

.....

FEATURES

Stainless Steel Case
Genuine S.B. Foot Tanning Co.® Leather Strap
with Quick-Release Spring Bars
Day/Date
Water Resistant to 50M
INDIGLO® Night Light



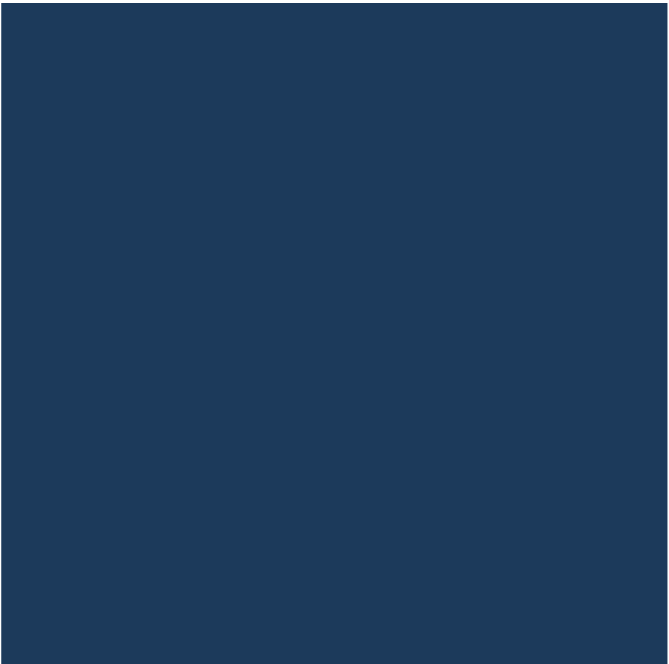
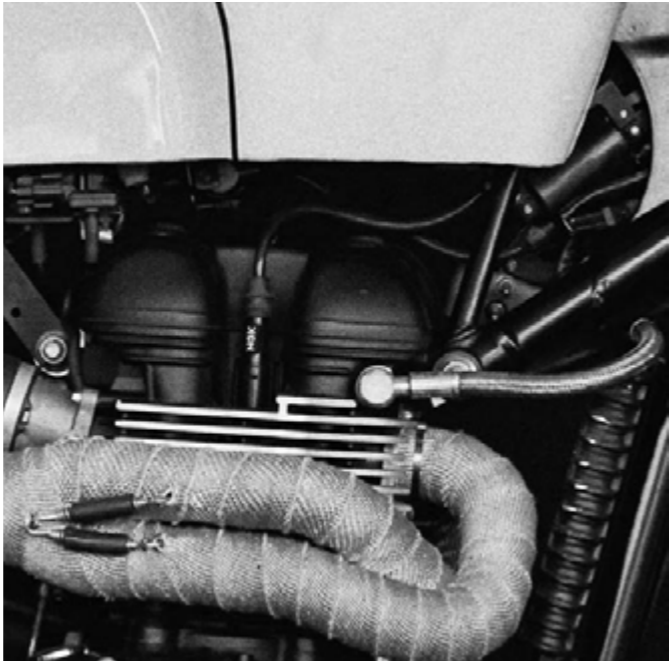
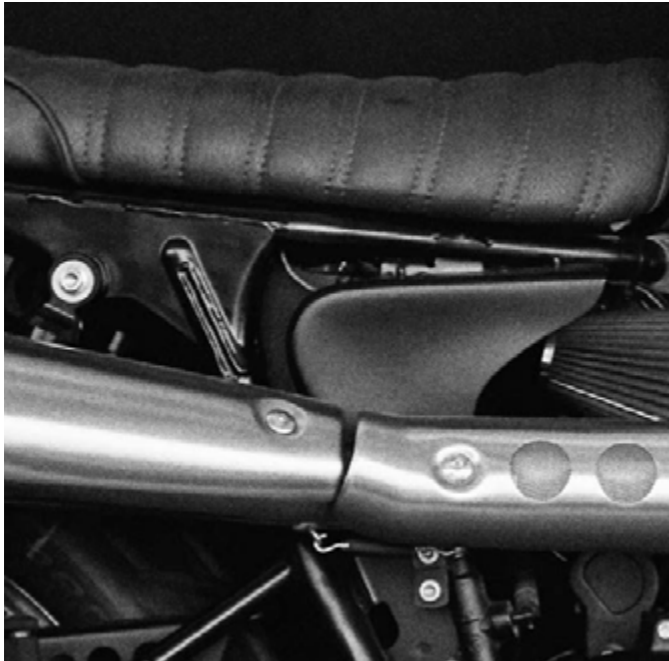
TW2R89100 - \$229.95

.....

Gunmetal Stainless Steel Case
Black Dial
Black Genuine Leather Strap
42mm Case, 20mm Lug



THE WATERBURY
.....
**TRADITIONAL
SUB - SECOND**



**WATERBURY TRADITIONAL
SUB-SECOND**
.....

FEATURES

- Stainless Steel Case
- Genuine S.B. Foot Tanning Co.® Leather Straps
with Quick Release Spring Bars
- INDIGLO® Night Light
- Water Resistant to 50M



TW2R88900 - \$249.95
.....

- Stainless Steel Case
- Pale Grey Dial
- Black Genuine Leather Strap
- 42mm Case, 20mm Lug



THE WATERBURY

.....

WATERBURY WELTON



WATERBURY WELTON

.....

FEATURES

- Stainless Steel Case
- Genuine S.B. Foot Tanning Co.® Leather Straps with Removable Cuff
- INDIGLO® Night Light
- Water Resistant to 30M

WATERBURY WELTON

Inspired by the first Timex® wristwatch, our Welton is a handsome timepiece featuring a sub-second dial, brown strap and matching removable cuff using S.B. Foot Tanning Co.® Leather. This watch also features a Stainless Steel case with an antique bronze finish, cream dial and is water-resistant up to 30 meters.

NEW



TW2R87900 - \$249.95

- Antique Bronze Tone
- Stainless Steel Case
- Tan Dial
- Brown Genuine Leather Slip-Thru Strap
- 38mm Case, 19mm Lug



NEW



TW2R88000 - \$249.95

- Tumbled Finish
- Stainless Steel Case
- Black Dial
- Brown Genuine Leather Slip-Thru Strap
- 38mm Case, 19mm Lug



POINT OF SALE

TWE077700
SMALL WINDOW DISPLAY A

199mmW x 370mmD x 300mmH

- 1 Main base tiered
- 11 Bobines
- 1 Backwall
- 1 Two sided printed graphic



TWE077800
SMALL WINDOW DISPLAY B

199mmW x 370mmD x 300mmH

- 1 Main base tiered
- 9 Bobines
- 1 Backwall
- 1 Two sided printed graphic
- 1 Small watch block
- 1 Medium watch block
- 1 Large watch block
- 3 Vertical rubber dipped cuffs
- 1 Horizontal rubber dipped cuffs



TWE077900
SMALL WINDOW DISPLAY C

199mmW x 370mmD x 300mmH

- 1 Main base tiered
- 9 Bobines
- 1 Backwall
- 1 Two sided printed graphic
- 1 Watch bar



A5ACRYLIC
A5 ACRYLIC SIGN HOLDER

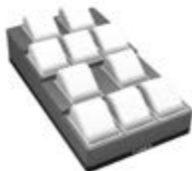
148mmW x 70mmD x 210mmH



TWE078100
SMALL IN-CASE DISPLAY A

199mmW x 350mmD x 80mmH

- 1 Main base tiered
- 11 Bobines



TWE078200
SMALL IN-CASE DISPLAY B

199mmW x 350mmD x 80mmH

- 1 Main base tiered
- 9 Bobines
- 1 Small watch block
- 1 Medium watch block
- 1 Large watch block
- 3 Vertical rubber dipped cuffs
- 1 Horizontal rubber dipped cuffs



TWE078300
SMALL IN-CASE DISPLAY C

199mmW x 350mmD x 80mmH

- 1 Main base tiered
- 9 Bobines
- 1 Watch bar



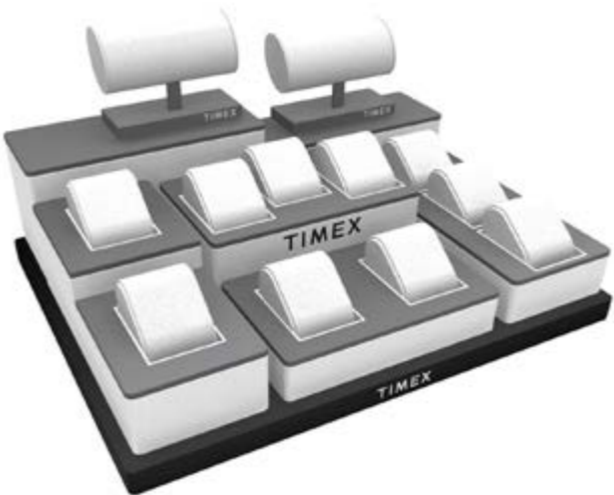
POINT OF SALE



TWE077600
MEDIUM WINDOW DISPLAY

450mmW x 370mmD x 350mmH

- 1 Main base with screen printed logo
- 1 Backwall with 3D logo on the front, screen printed logo on the back
- 2 Watch bars
- 1 Vertical block with 3 bobines
- 1 Vertical tiered block with 2 bobines
- 1 Horizontal short block with 2 bobines
- 1 Horizontal tall block with 3 bobines
- 1 Large riser block
- 1 Short riser block



TWE078000
MEDIUM IN-CASE DISPLAY

199mmW x 350mmD x 150mmH

- 1 Main base with screen printed logo
- 2 Watch bars
- 1 Vertical block with 3 bobines
- 1 Vertical tiered block with 2 bobines
- 1 Horizontal short block with 2 bobines
- 1 Horizontal tall block with 3 bobines
- 1 Large riser block
- 1 Short riser block

POINT OF SALE



TWX298900 > Vertical Cuff Pre-Pack
Set includes 10 pieces

TWX298700 > Watch Bar
1 piece

TWX298800 > Watch Block Pre-Pack
Set includes: 1 small watch block, 1 medium watch block, 1 large watch block, 3 vertical rubber dipped cuffs, 1 Horizontal rubber dipped cuff

TWX299000 > Horizontal Cuff Pre-Pack
Set includes 10 pieces

TWX298600 > Bobine
Set includes 5 pieces

TWX299500 > Well Filler Pre-Pack
Set includes 10 pieces

TWX299100 > Small Graphic Holder
1 piece

TWX300000 > Island Base Plate
1 piece

MERCHANDISING GUIDELINES

There are basic visual merchandising guidelines that will help you create a visually impactful display:

Step by Step

- › First group your Timex watches by category (Easy Reader® , Crystal Bloom, Fairfield etc)
- › Keep similar styles together with their product stories.
- › Relevant support visuals and display cards must be used to complement the display.



SOCIAL MEDIA ASSETS

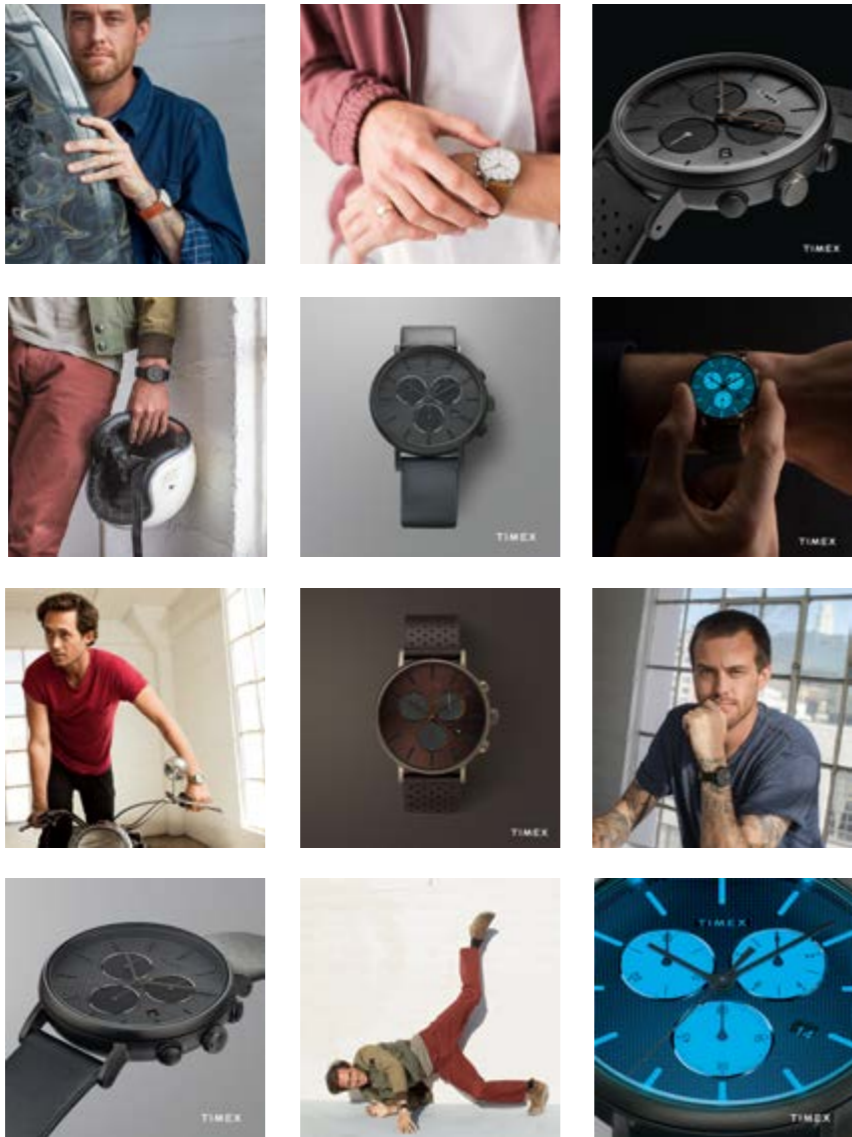


Our in-house Design & Marketing team are available to produce tailor made material to suit your needs.

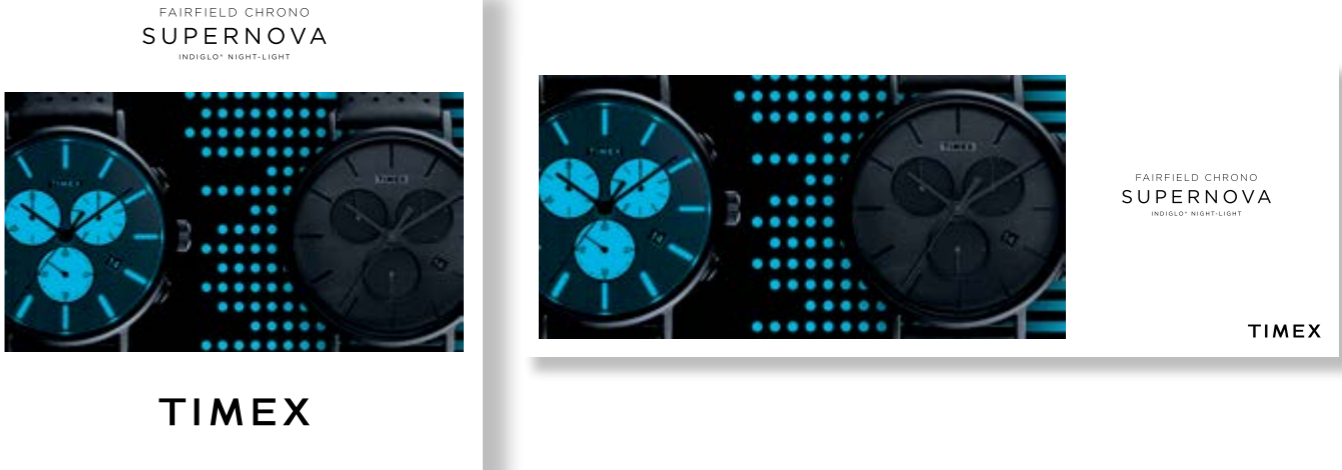
Whether it be Facebook posts or eDMs to call out new products, trends or promotions to your fans, we are happy to assist.

Contact our team on
(02) 8543 4600 or email
marketing@designa.com.au

#TAKETIME



WEB BANNERS



EDM TEMPLATES

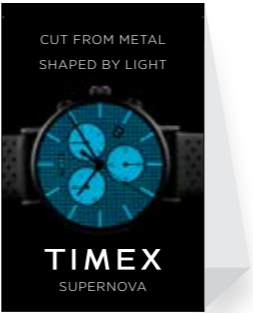


COLLATERAL

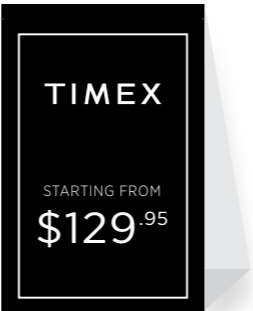
Small Window Display



Tri-Card



Large Window Display



Small Acrylic Sign Holders



IN-STORE VISUALS



NOTES

Notes section with horizontal lines for writing.

TIMEX

CUSTOMER SERVICE & WARRANTY INFORMATION

Designa Accessories has its own in-house Customer Service Centre to help you & your customers with all enquiries relating to the servicing and repair of all Designa Accessories products. Our Service Centre is manned by professional service consultants in conjunction with our team of qualified watch repairers and technicians. Call the Service Centre on (02) 8543 4600 or email customer.service@designa.com.au

2 YEAR LIMITED WARRANTY

Your Timex Watch is guaranteed for a period of two (2) years from the date of purchase against all defects in material or workmanship.

This does not apply to normal wear and tear or abuse of components and watch finish or plating and does not cover water damage caused by non-compliance with the enclosed water resistancy usage guide.

Under the Australian Consumer Law, we advise our goods come with guarantees that cannot be excluded under the Australian Consumer Law. You are entitled to a replacement or refund for a major failure and for compensation for any other reasonably foreseeable loss or damage. You are also

entitled to have the goods repaired or replaced if the goods fail to be of acceptable quality and the failure does not amount to a major failure (the "Mandatory Provision").

In the event of a defect or malfunction within this period, providing the watch care and precautions are followed, your Timex watch will be repaired or replaced with the same or similar model at our discretion. Your replacement watch will be warranted for the remainder of the period applicable to the original date of purchase. The following parts are covered by the Timex 2 year limited warranty:

1. Movement 2 YEARS
2. Battery 1 YEAR

The following parts are not covered by the Timex 2 year limited warranty:

1. Band/strap, case, clasp, hands, dial, crown and stones (including damage, scratching, breakage).
2. Lens breakage, scratching or damage.
3. Water leakage if the crown is not activated or the water care guidelines have not been followed.

4. General wear and tear, finish or plating of the watch or an defects arising from misuse or any other use which is not in accordance with the Recommended Watch Care Precautions.

For the warranty to be valid, it must be dated at the time of purchase and stamped by the retailer. Any other warranty given by the retailer is entirely their responsibility and terms of the warranty cannot be changed by any person.

Head to **www.designaaccessories.com.au** for further information, or to download our service & repair form. In the event of a malfunction, return the watch, the warranty and proof of purchase carefully packed (do not send in original packaging as it will not be returned) and registered to:

Designa Accessories
PO Box 2576
Taren Point
NSW 2229
Australia

INDEX

CODE	PAGE	CODE	PAGE	CODE	PAGE	CODE	PAGE
TW2R26000	35	TW2R45800	21	TW2R69000	47	TW2R87900	55
TW2R26200	35	TW2R46400	15	TW2R69200	47	TW2R88000	55
TW2R26300	35	TW2R46500	15	TW2R70200	30	TW2R88400	49
TW2R26400	33	TW2R47200	17	TW2R70300	31	TW2R88900	53
TW2R26500	33	TW2R47300	17	TW2R70400	31	TW2R89100	51
TW2R26600	33	TW2R60400	19	TW2R70500	30	TW2R96400	11
TW2R26700	37	TW2R60600	21	TW2R71600	45	TW2R96500	11
TW2R26800	37	TW2R60700	21	TW2R71800	45	TW2R96800	13
TW2R27100	37	TW2R67300	19	TW2R71900	45	TW2R96900	13
TW2R35700	39	TW2R67400	21	TW2R72300	45	TW2R97900	25
TW2R35900	39	TW2R67600	7	TW2R72400	43	TW2R98000	25
TW2R36000	39	TW2R67900	7	TW2R72500	43	TW2T10300	8
TW2R37300	9	TW2R68600	10	TW2R79800	27	TW2T10700	7
TW2R37400	9	TW2R68700	10	TW2R79900	27	TW2T11500	29
TW2R37500	9	TW2R68800	10	TW2R80000	27	TW2T11600	29
TW2R45700	21	TW2R68900	11	TW2R80100	27		