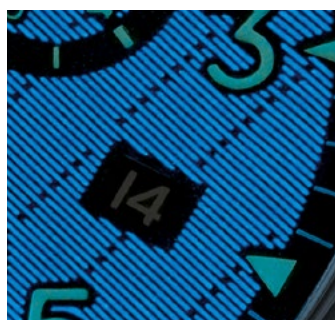
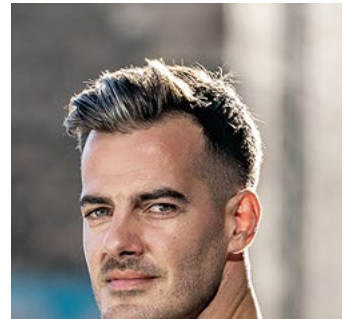




TIMEX

WINTER 2019





WE DON'T STOP™
BECAUSE YOU DON'T

TIMEX

WINTER 2019

MEN'S COLLECTION

MEN'S HERITAGE COLLECTION

Waterbury Classic Chronograph	5
Waterbury Traditional Sub Second	6
Waterbury Traditional Day Date	7

MEN'S ESSENTIAL COLLECTION

Fairfield 41mm	9
Fairfield Chronograph	10
Fairfield Chronograph Supernova™	12
Standard	14
Standard Chronograph	15

MEN'S MILITARY COLLECTION

MK1™ Steel Chronograph Supernova™	17
MK1™ Steel Chronograph	18
MK1™ Steel	19
Allied 40mm	20

MEN'S DRESS COLLECTION

Southview 41mm	23
Southview Multi-Function	23

WOMEN'S COLLECTION

WOMEN'S HERITAGE COLLECTION

Waterbury Women's	25
-------------------	----

WOMEN'S ESSENTIAL COLLECTION

Fairfield 37mm	27
----------------	----

WOMEN'S CITY COLLECTION

Milano Petite	29
---------------	----

MARKETING MATERIAL

Point of Sale	30
Merchandising Guidelines	33
Social Media Assets	34
Web Banners	35
EDM Templates	36
Collateral & In-Store Visuals	38
Warranty & Customer Service	40

TIMEX



TIMEX BOUTIQUE

WATERBURY CLASSIC CHRONOGRAPH

FEATURES

Stainless Steel Case
Genuine Leather Strap
with Quick-Release Spring-Bars
Chronograph with 4 Hour Capacity
QuickDate®
Water Resistant to 30M
INDIGLO® Night-Light

NEW



TW2T28000 - \$279.95

Brushed/Polished
Stainless Steel Case
White Dial
Tan Matte Leather Strap
40mm Case, 20mm Lug



MEN'S HERITAGE COLLECTION



NEW



TW2T28200 - \$279.95

Brushed/Polished
Stainless Steel Case
Black Dial
Brown Matte Leather Strap
40mm Case, 20mm Lug



WATERBURY TRADITIONAL SUB SECOND

FEATURES

Stainless Steel Case
Genuine S.B. Foot Tanning Co. Leather Strap
with Quick-Release Spring-Bars
Sub-dial with Seconds
Water Resistant to 50M
INDIGLO® Night Light



TW2R88900 - \$249.95

Stainless Steel Case
Pale Grey Dial
Black Matte Leather Strap
42mm Case, 20mm Lug



WATERBURY TRADITIONAL DAY DATE

FEATURES

Stainless Steel Case
Genuine S.B. Foot Tanning Co. Leather Strap
with Quick-Release Spring-Bars
Day & Date Feature
Water Resistant to 50M
INDIGLO® Night Light



TW2R89100 - \$229.95

Gunmetal Stainless
Steel Case
Black Dial
Black Matte Leather Strap
42mm Case, 20mm Lug



TIMEX



TIMEX BOUTIQUE

FAIRFIELD 41MM

FEATURES

Genuine Leather Strap
with Quick-Release Spring-Bars
Water Resistant to 30M
INDIGLO® Night-Light

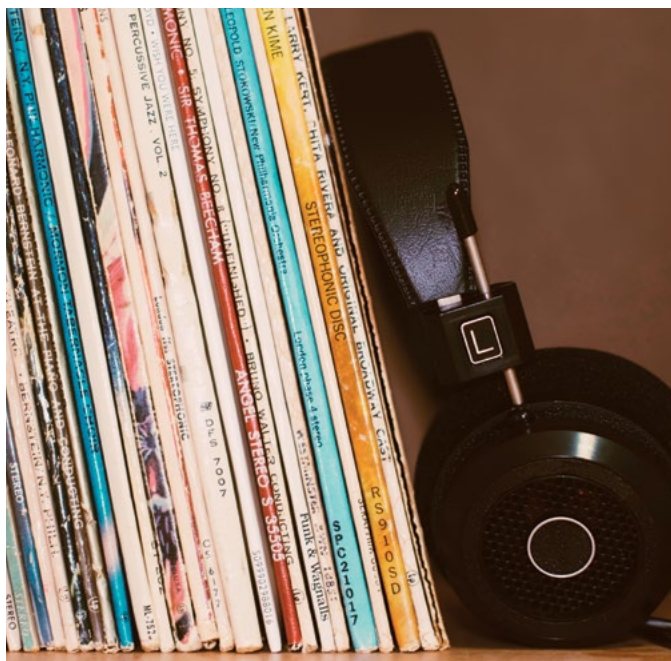


TW2R26000 - \$149.95

Polished Gold-tone Case
Black Dial
Black Smooth Leather Strap
41mm Case, 20mm Lug



MEN'S ESSENTIAL COLLECTION



TW2R26200 - \$149.95

Polished Rose Gold-tone Case
Natural Dial
Tan Smooth Leather Strap
41mm Case, 20mm Lug



TW2R26300 - \$149.95

Polished Silver-tone Case
White Dial
Black Smooth Leather Strap
41mm Case, 20mm Lug



FAIRFIELD CHRONOGRAPH

FEATURES

Stainless Steel Mesh Band (TW2R27100)
or Genuine Leather Strap
with Quick-Release Spring-Bars
Chronograph with 4 Hour Capacity
QuickDate®
Water Resistant to 30M
INDIGLO® Night-Light



TW2T11500 - \$229.95

Polished Silver-tone Case
Rose Gold-tone Accents
Black Dial
Dark Brown Smooth Leather Strap
41mm Case, 20mm Lug



TW2T11600 - \$229.95

Polished Rose Gold-tone Case
Black Dial
Black Smooth Leather Strap
41mm Case, 20mm Lug



TW2R26700 - \$199.95

Polished Silver-tone Case
White Dial
Tan Smooth Leather Strap
41mm Case, 20mm Lug



TW2R26800 - \$199.95

Polished Black Case
Black Dial
Black Smooth Leather Strap
41mm Case, 20mm Lug



TW2R27100 - \$229.95

Polished Silver-tone Case
White Dial
Stainless Steel Mesh Band
41mm Case, 20mm Lug



FAIRFIELD CHRONOGRAPH SUPERNOVA™

FEATURES

Innovative New Dial Treatment
Genuine Leather Strap
or Stainless Steel Mesh Band (TW2R97900, TW2R98000)
with Quick-Release Spring-Bars
Chronograph with 4 Hour Capacity
QuickDate®
Water Resistant to 30M
INDIGLO® Night-Light



SUPERNOVA INDIGLO® DIAL DESIGN

The TIMEX Supernova™ is a new way to experience our INDIGLO® Night-Light technology. A thin layer of metal is placed on top of the dial and, using precision, laser cutting techniques, the top layer is perforated to allow for the light to pass through, creating a new and unique way to illuminate the dial.

NEW



TW2R97700 - \$249.95

Matte Silver-tone Case
Silver-tone Dial
Blue Matte Leather Strap
41mm Case, 20mm Lug



TW2R79800 - \$199.95

Matte Black Case
Black Dial
Black Matte Leather Strap
41mm Case 20mm Lug



TW2R79900 - \$199.95

Matte Silver-tone Case
Silver-tone Dial
Tan Matte Leather Strap
41mm Case, 20mm Lug



TW2R97900 - \$249.95

Matte Silver-tone Case
Silver-tone Dial
Silver-tone Stainless Steel
Mesh Band
41mm Case, 20mm Lug



NEW



TW2R97800 - \$249.95

Matte Gunmetal Grey Case
Grey Dial
Grey Matte Leather Strap
41mm Case, 20mm Lug



TW2R80000 - \$199.95

Matte Black Case
Grey Dial
Brown Matte Leather Strap
41mm Case, 20mm Lug



TW2R80100 - \$199.95

Matte Bronze-tone Case
Bronze-tone Dial
Brown Matte Leather Strap
41mm Case, 20mm Lug



TW2R98000 - \$249.95

Matte Gunmetal Grey Case
Grey Dial
Grey Stainless Steel
Mesh Band
41mm Case, 20mm Lug



STANDARD

FEATURES

Genuine Leather Strap
with Quick-Release Spring-Bars
Water Resistant to 30M
INDIGLO® Night-Light

NEW



TW2T20000 - \$149.95

Polished Gold-tone Case
Blue Dial
Tan Smooth Leather Strap
40mm Case, 20mm Lug



STANDARD CHRONOGRAPH

FEATURES

Genuine Leather Strap
with Quick-Release Spring-Bars
Chronograph with 4 Hour Capacity
QuickDate®
Water Resistant to 30M
INDIGLO® Night-Light

NEW



TW2T20900 - \$229.95

Polished Gold-tone Case
Grey Dial
Brown Smooth Leather Strap
41mm Case, 20mm Lug



NEW



TW2T20200 - \$149.95

Polished Silver-tone Case
Black Dial
Black Smooth Leather Strap
40mm Case, 20mm Lug



NEW



TW2T20700 - \$149.95

Polished Silver-tone Case
Cream Dial
Brown Smooth Leather Strap
40mm Case, 20mm Lug



NEW



TW2T21000 - \$229.95

Polished Silver-tone Case
Cream Dial
Brown Smooth Leather Strap
41mm Case, 20mm Lug



NEW



TW2T21100 - \$229.95

Polished Silver-tone Case
Black Dial
Black Smooth Leather Strap
41mm Case, 20mm Lug



TIMEX



MEN'S MILITARY
COLLECTION



TIMEX BOUTIQUE

MK1™ STEEL CHRONOGRAPH SUPERNOVA™

FEATURES

Stainless Steel Case
Domed and Tinted Acrylic Crystal
Genuine Leather Strap
with Quick-Release Spring-Bars
or Single Layer Fabric Slip-Thru Strap (TW2T29700)
Chronograph with 4 Hour Capacity
QuickDate®
Water Resistant to 30M
INDIGLO® Night-Light



NEW



TW2T29700 - \$279.95

Brushed Black Stainless
Steel Case
Black Dial
Black Fabric Strap
42mm Case, 20mm Lug



NEW



TW2T29500 - \$279.95

Brushed Black Stainless
Steel Case
Black Dial
Black Matte Leather Strap
42mm Case, 20mm Lug



NEW



TW2T29600 - \$279.95

Matte Grey Stainless
Steel Case
Black Dial
Brown Matte Leather Strap
42mm Case, 20mm Lug



MK1™ STEEL CHRONOGRAPH

FEATURES

Stainless Steel Case
Domed Acrylic Crystal
Geniune S.B Foot Tanning Co.® Leather Strap
with Quick-Release Spring Bars
(TW2R96400, TW2R96500)
or Fabric Strap with Quick-Release Spring-Bars
(TW2R68600, TW2R68700, TW2R68800)
Chronograph with 4 Hour Capacity
QuickDate®
Water Resistant to 30M
INDIGLO® Night-Light



TW2R96400 - \$279.95

Matte Stainless Steel Case
Natural Dial
Brown Matte Leather Strap
42mm Case, 20mm Lug



TW2R96500 - \$279.95

Matte Black Stainless Steel
Case
Black Dial
Brown Matte Leather Strap
42mm Case, 20mm Lug



MK1™ STEEL

FEATURES

Stainless Steel Case
Domed Acrylic Crystal
Geniune S.B Foot Tanning Co.® Leather Strap
with Quick-Release Spring Bars
Water Resistant to 30M
INDIGLO® Night-Light



TW2R96800 - \$229.95

Matte Stainless Steel Case
Natural Dial
Brown Matte Leather Strap
40mm Case, 20mm Lug



TW2R68600 - \$229.95

Matte Stainless Steel Case
Olive Green Dial
Olive Green Leather Backed
Fabric Quick-Release Strap
42mm Case, 20mm Lug



TW2R68700 - \$229.95

Brushed Black Stainless Steel Case
Black Dial
Black Leather Backed Fabric
Quick-Release Strap
42mm Case, 20mm Lug



TW2R68800 - \$229.95

Brushed Stainless Steel Case
Grey Dial
Black Leather Backed Fabric
Quick-Release Strap
42mm Case, 20mm Lug



TW2R96900 - \$229.95

Matte Black Stainless Steel Case
Black Dial
Brown Matte Leather Strap
40mm Case, 20mm Lug



ALLIED 40MM

FEATURES

- Genuine Leather Strap
- QuickDate®
- Water Resistant to 50M
- INDIGLO® Night-Light



TW2R46500 - \$149.95

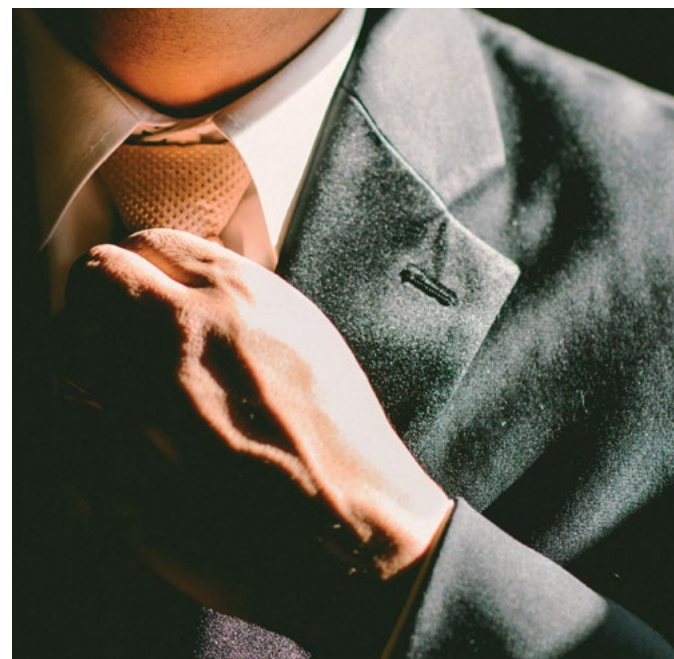
- Matte Grey Case
- Black Dial
- Black Leather Strap
- 40mm Case, 20mm Lug



TIMEX



MEN'S DRESS
COLLECTION



TIMEX BOUTIQUE

SOUTHVIEW 41MM

FEATURES

Genuine Leather Straps
Water Resistant to 30M

NEW



TW2T34900 - \$129.95

Polished Black Case
Black Dial
Black Matte Leather Strap
41mm Case, 20 Lug



SOUTHVIEW MULTI-FUNCTION

FEATURES

Multi-Function
Genuine Leather Straps
Water Resistant to 30M

NEW



TW2T35200 - \$149.95

Polished Black Case
Black Dial
Black Matte Leather Strap
41mm Case, 20 Lug



TIMEX



WOMEN'S HERITAGE
COLLECTION



TIMEX BOUTIQUE

WATERBURY WOMEN'S

FEATURES

Stainless Steel Case
Genuine Leather Strap
with Painted Stripe Pattern (TW2T26300)
or Stainless Steel Mesh Band
Water Resistant to 50M
INDIGLO® Night-Light

NEW



TW2T26300 - \$229.95

Brushed/Polished Gold-tone
Case
Navy Dial
Tan Matte Leather Strap
34mm Case, 16mm Lug



NEW



TW2T36200 - \$249.95

Brushed/Polished Rose
Gold-tone Stainless Steel Case
Cream Dial
Rose Gold-tone Stainless Steel
Mesh Band
34mm Case, 16mm Lug



NEW



TW2T36300 - \$249.95

Brushed/Polished Stainless
Steel Case
Navy Dial
Stainless Steel Mesh Band
34mm Case, 16mm Lug



NEW



TW2T36400 - \$249.95

Brushed/Polished Gold-tone
Stainless Steel Case
Black Dial
Gold-tone Stainless Steel
Mesh Band
34mm Case, 16mm Lug



TIMEX



TIMEX BOUTIQUE

FAIRFIELD 37MM

FEATURES

Stainless Steel Mesh Band
with Quick-Release Spring-Bars
Water Resistant to 30M
INDIGLO® Night-Light



TW2R26400 - \$179.95

Polished Rose Gold-tone Case
Natural Dial
Polished Rose Gold-tone
Mesh Strap
37mm Case, 18mm Lug



WOMEN'S ESSENTIAL
COLLECTION



TW2R26500 - \$179.95

Polished Gold-tone Case
Natural Dial
Polished Gold-tone Mesh
Strap
37mm Case, 18mm Lug



TW2R26600 - \$179.00

Polished Silver-tone Case
White Dial
Polished Silver-tone Mesh
Strap
37mm Case, 18mm Lug



TIMEX



WOMEN'S CITY
COLLECTION

TIMEX BOUTIQUE

MILANO PETITE

FEATURES

Stainless Steel Mesh Band
Water Resistant to 30M

NEW



TW2T37600 - \$199.95

Polished Gold-tone Case
Gold-tone Dial
Gold-tone Stainless Steel
Mesh Band
24mm Case, 12mm Lug



NEW



TW2T37700 - \$199.95

Polished Silver-tone Case
Silver-tone Dial
Stainless Steel Mesh Band
24mm Case, 12mm Lug



NEW



TW2T37800 - \$199.95

Polished Rose Gold-tone Case
Silver-tone Dial
Rose Gold-tone Stainless
Steel Mesh Band
24mm Case, 12mm Lug



POINT OF SALE

TWE077700
SMALL WINDOW DISPLAY A

199mmW x 370mmD x 300mmH

- 1 Main base tiered
- 11 Bobines
- 1 Backwall
- 1 Two sided printed graphic



TWE077800
SMALL WINDOW DISPLAY B

199mmW x 370mmD x 300mmH

- 1 Main base tiered
- 9 Bobines
- 1 Backwall
- 1 Two sided printed graphic
- 1 Small watch block
- 1 Medium watch block
- 1 Large watch block
- 3 Vertical rubber dipped cuffs
- 1 Horizontal rubber dipped cuffs



TWE077900
SMALL WINDOW DISPLAY C

199mmW x 370mmD x 300mmH

- 1 Main base tiered
- 9 Bobines
- 1 Backwall
- 1 Two sided printed graphic
- 1 Watch bar



A5ACRYLIC
A5 ACRYLIC SIGN HOLDER

148mmW x 70mmD x 210mmH



POINT OF SALE

TWE078100
SMALL IN-CASE DISPLAY A

199mmW x 350mmD x 80mmH

- 1 Main base tiered
- 11 Bobines



TWE078200
SMALL IN-CASE DISPLAY B

199mmW x 350mmD x 80mmH

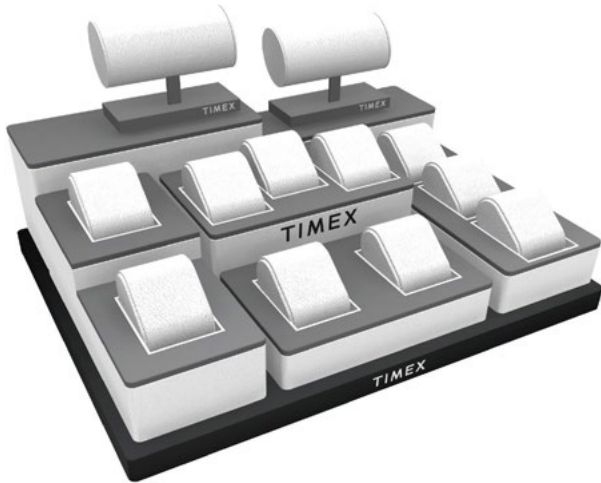
- 1 Main base tiered
- 9 Bobines
- 1 Small watch block
- 1 Medium watch block
- 1 Large watch block
- 3 Vertical rubber dipped cuffs
- 1 Horizontal rubber dipped cuffs



TWE078300
SMALL IN-CASE DISPLAY C

199mmW x 350mmD x 80mmH

- 1 Main base tiered
- 9 Bobines
- 1 Watch bar



TWE077600
MEDIUM WINDOW DISPLAY

450mmW x 370mmD x 350mmH

- 1 Main base with screen printed logo
- 1 Backwall with 3D logo on the front, screen printed logo on the back
- 2 Watch bars
- 1 Vertical block with 3 bobines
- 1 Vertical tiered block with 2 bobines
- 1 Horizontal short block with 2 bobines
- 1 Horizontal tall block with 3 bobines
- 1 Large riser block
- 1 Short riser block

TWE078000
MEDIUM IN-CASE DISPLAY

199mmW x 350mmD x 150mmH

- 1 Main base with screen printed logo
- 2 Watch bars
- 1 Vertical block with 3 bobines
- 1 Vertical tiered block with 2 bobines
- 1 Horizontal short block with 2 bobines
- 1 Horizontal tall block with 3 bobines
- 1 Large riser block
- 1 Short riser block

POINT OF SALE

	TWX298900 — Vertical Cuff Pre-Pack Set includes 10 pieces
	TWX298700 — Watch Bar 1 piece
	TWX298800 — Watch Block Pre-Pack Set includes: 1 small watch block, 1 medium watch block, 1 large watch block, 3 vertical rubber dipped cuffs, 1 Horizontal rubber dipped cuff
	TWX299000 — Horizontal Cuff Pre-Pack Set includes 10 pieces
	TWX298600 — Bobine Set includes 5 pieces
	TWX299500 — Well Filler Pre-Pack Set includes 10 pieces
	TWX299100 — Small Graphic Holder 1 piece
	TWX300000 — Island Base Plate 1 piece

MERCHANDISING GUIDELINES

There are basic visual merchandising guidelines that will help you create a visually impactful display:

Step by Step

- › First group your TIMEX watches by category (Waterbury, Fairfield, MK1 etc)
- › Keep similar styles together with their product stories.
- › Relevant support visuals and display cards must be used to complement the display.



SOCIAL MEDIA ASSETS

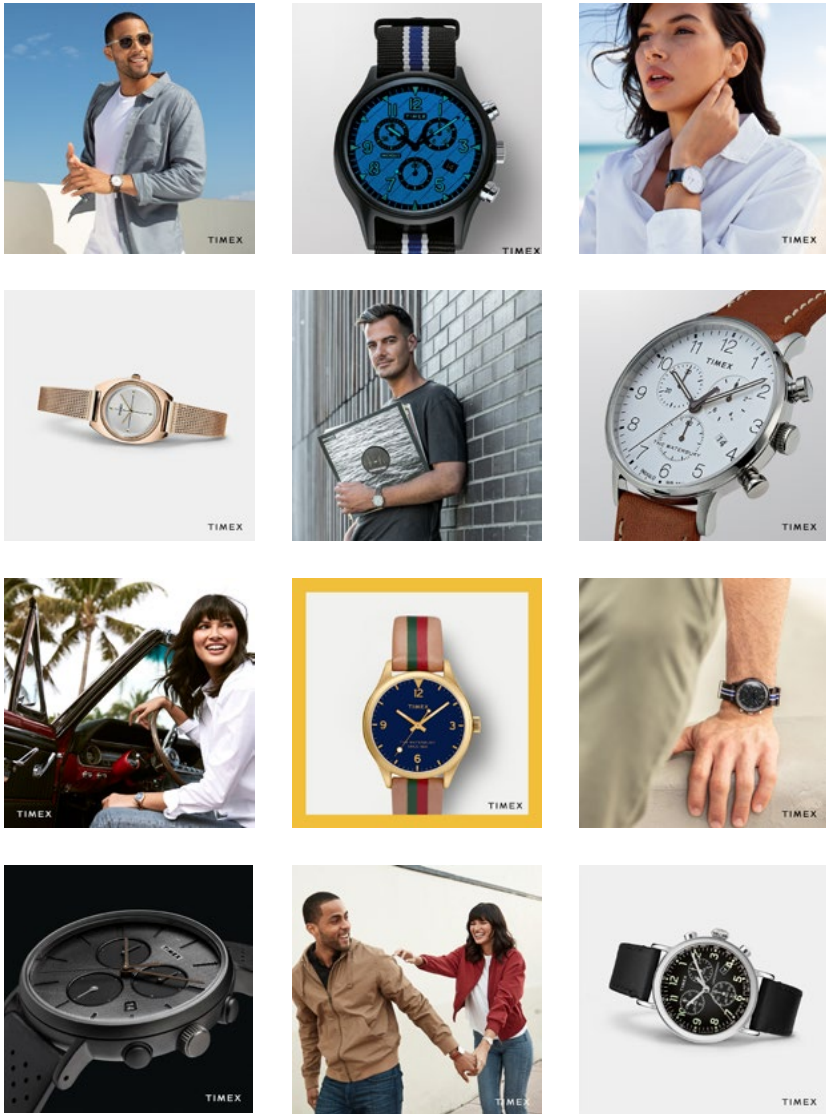


Our in-house Design & Marketing team are available to produce tailor made material to suit your needs.

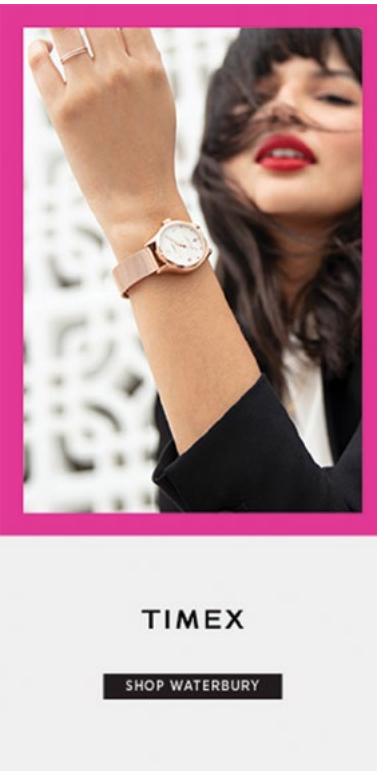
Whether it be Facebook posts or eDMs to call out new products, trends or promotions to your fans, we are happy to assist.

Contact our Brand team on
(02) 8543 4600 or email
marketing@designa.com.au


#TAKETIME




WEB BANNERS




EDM TEMPLATES



NEW



NEW



TW2R97700 - \$249.95
Matte Silver-tone Case
Silver-tone Dial
Blue Matte Leather Strap
41mm Case, 20mm Lug

TW2R97800 - \$249.95
Matte Grey Case
Grey Dial
Grey Matte Leather Strap
41mm Case, 20mm Lug

SUPERNOVA INDIGLO® DIAL DESIGN

The TIMEX Supernova is the new way to experience our INDIGLO® Night-Light technology. A thin layer of metal is placed on top of the dial and, using precision, laser cutting techniques, the top layer is perforated to allow the light to pass through, creating new and unique way to illuminate the dial.

#TAKETIME
SUPERNOVA INDIGLO®


TIMEX

SHOP MEN | SHOP WOMEN | SHOP KIDS | CUSTOMIZE


YOU KNOW CRAFTSMANSHIP TAKES TIME

Watchmakers Est. 1854

SHOP WATERBURY MENS



SHOP WATERBURY WOMENS



165 YEARS

WE DON'T STOP™
BECAUSE YOU DON'T

LET'S BE SOCIAL

CONTACT US
Monday - Friday 9am - 5pm
603.886.1234
customerservice@timex.com


This email was sent to [timex@timex.com](#) by Timex Group USA, Inc.
355 Chestnut Street, Waterbury CT 06706-0001
Manage Preferences | Unsubscribe

TIMEX


SHOP MEN | SHOP WOMEN | SHOP KIDS | CUSTOMIZE

WE DON'T STOP™
BECAUSE YOU DON'T.

We respect your hustle, we've been doing it for 165 years.




IT'S A MOVEMENT




Because if "good enough" was good enough, your watch would still be in your pocket.

SHOP MENS



WE ARE REBEL WATCHMAKERS



We've disrupted a 300 year old industry and stayed true to who we are.

SHOP WOMENS


LET'S BE SOCIAL

CONTACT US
Monday - Friday 9am - 5pm
603.886.1234
customerservice@timex.com


This email was sent to [timex@timex.com](#) by Timex Group USA, Inc.
355 Chestnut Street, Waterbury CT 06706-0001
Manage Preferences | Unsubscribe

TIMEX

SHOP MEN | SHOP WOMEN | SHOP KIDS | CUSTOMIZE



YOU KNOW CRAFTSMANSHIP TAKES TIME



SHOP WATERBURY

165 YEARS

WE DON'T STOP™
BECAUSE YOU DON'T

LET'S BE SOCIAL

CONTACT US
Monday - Friday 9am - 5pm
603.886.1234
customerservice@timex.com

This email was sent to [timex@timex.com](#) by Timex Group USA, Inc.
355 Chestnut Street, Waterbury CT 06706-0001
Manage Preferences | Unsubscribe

COLLATERAL

Small Window Display



Tri-Card



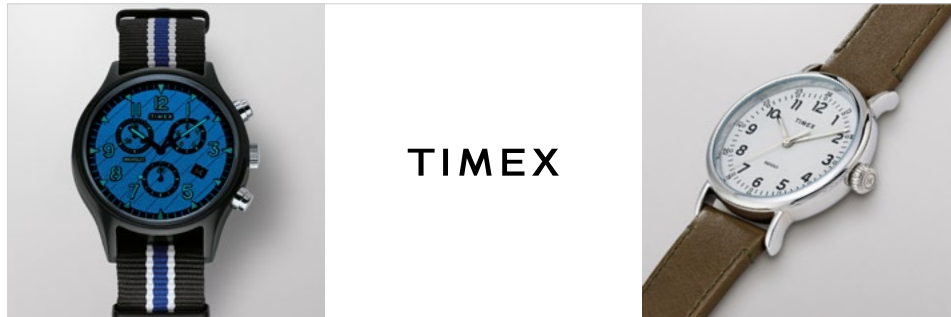
Large Window Display



Small Acrylic Sign Holders



IN-STORE VISUALS



NOTES

[illegible]

TIMEX

CUSTOMER SERVICE & WARRANTY INFORMATION

Designa Accessories has its own in-house Customer Service Centre to help you & your customers with all enquiries relating to the servicing and repair of all Designa Accessories products. Our Service Centre is manned by professional service consultants in conjunction with our team of qualified watch repairers and technicians. Call the Service Centre on (02) 8543 4600 or email customer.service@designa.com.au

2 YEAR LIMITED WARRANTY

Your Timex Watch is guaranteed for a period of two (2) years from the date of purchase against all defects in material or workmanship.

This does not apply to normal wear and tear or abuse of components and watch finish or plating and does not cover water damage caused by non-compliance with the enclosed water resistancy usage guide.

Under the Australian Consumer Law, we advise our goods come with guarantees that cannot be excluded under the Australian Consumer Law. You are entitled to a replacement or refund for a major failure and for compensation for any other reasonably foreseeable loss or damage.

You are also entitled to have the goods repaired or replaced if the goods fail to be of acceptable quality and the failure does not amount to a major failure (the "Mandatory Provision").

In the event of a defect or malfunction within this period, providing the watch care and precautions are followed, your Timex watch will be repaired or replaced with the same or similar model at our discretion. Your replacement watch will be warranted for the remainder of the period applicable to the original date of purchase. The following parts are covered by the Timex 2 year limited warranty:

1. Movement 2 YEARS
2. Battery 1 YEAR

The following parts are not covered by the Timex 2 year limited warranty:

1. Band/strap, case, clasp, hands, dial, crown and stones (including damage, scratching, breakage).
2. Lens breakage, scratching or damage.
3. Water leakage if the crown is not activated or the water care guidelines have not been followed.

4. General wear and tear, finish or plating of the watch or an defects arising from misuse or any other use which is not in accordance with the Recommended Watch Care Precautions.

For the warranty to be valid, it must be dated at the time of purchase and stamped by the retailer. Any other warranty given by the retailer is entirely their responsibility and terms of the warranty cannot be changed by any person.

Head to **www.designaaccessories.com.au** for further information, or to download our service & repair form. In the event of a malfunction, return the watch, the warranty and proof of purchase carefully packed (do not send in original packaging as it will not be returned) and registered to:

Designa Accessories
PO Box 2576
Taren Point
NSW 2229
Australia

INDEX

CODE	PAGE	CODE	PAGE	CODE	PAGE	CODE	PAGE
TW2R26000	9	TW2R79800	13	TW2R98000	13	TW2T29600	17
TW2R26200	9	TW2R79900	13	TW2T11500	10	TW2T29700	17
TW2R26300	9	TW2R80000	13	TW2T11600	10	TW2T34900	23
TW2R26400	27	TW2R80100	13	TW2T20000	14	TW2T35200	23
TW2R26500	27	TW2R88900	6	TW2T20200	14	TW2T36200	25
TW2R26600	27	TW2R89100	7	TW2T20700	14	TW2T36300	25
TW2R26700	10	TW2R96400	18	TW2T20900	15	TW2T36400	25
TW2R26800	10	TW2R96500	18	TW2T21000	15	TW2T37600	29
TW2R27100	10	TW2R96800	19	TW2T21100	15	TW2T37700	29
TW2R46500	20	TW2R96900	19	TW2T26300	25	TW2T37800	29
TW2R68600	18	TW2R97700	12	TW2T28000	5		
TW2R68700	18	TW2R97800	12	TW2T28200	5		
TW2R68800	18	TW2R97900	13	TW2T29500	17		

DESIGNA ACCESSORIES PTY LTD PO BOX 2576, Taren Point NSW 2229

Tel: (02) 8543 4600 • Fax (02) 8543 4690

